

Operator's Manuals for Pyramis System

Pyramis system manual and instructions are available to you in electronic form. These documents have been loaded onto your Pyramis system server and can be accessed using the instructions below.

NOTE: Adobe® Acrobat® Reader® software is required to view the electronic files. The software is available to download, free of charge, on the Adobe website, www.adobe.com.*

Paper copies of Pyramis system manuals are also available to order. To order a hard copy of the instructions, contact your local representative or call Quinton Customer Service at (800)426-0337.

HOW TO ACCESS MANUALS

Follow the directions below to locate and open the electronic manuals for the Pyramis system.

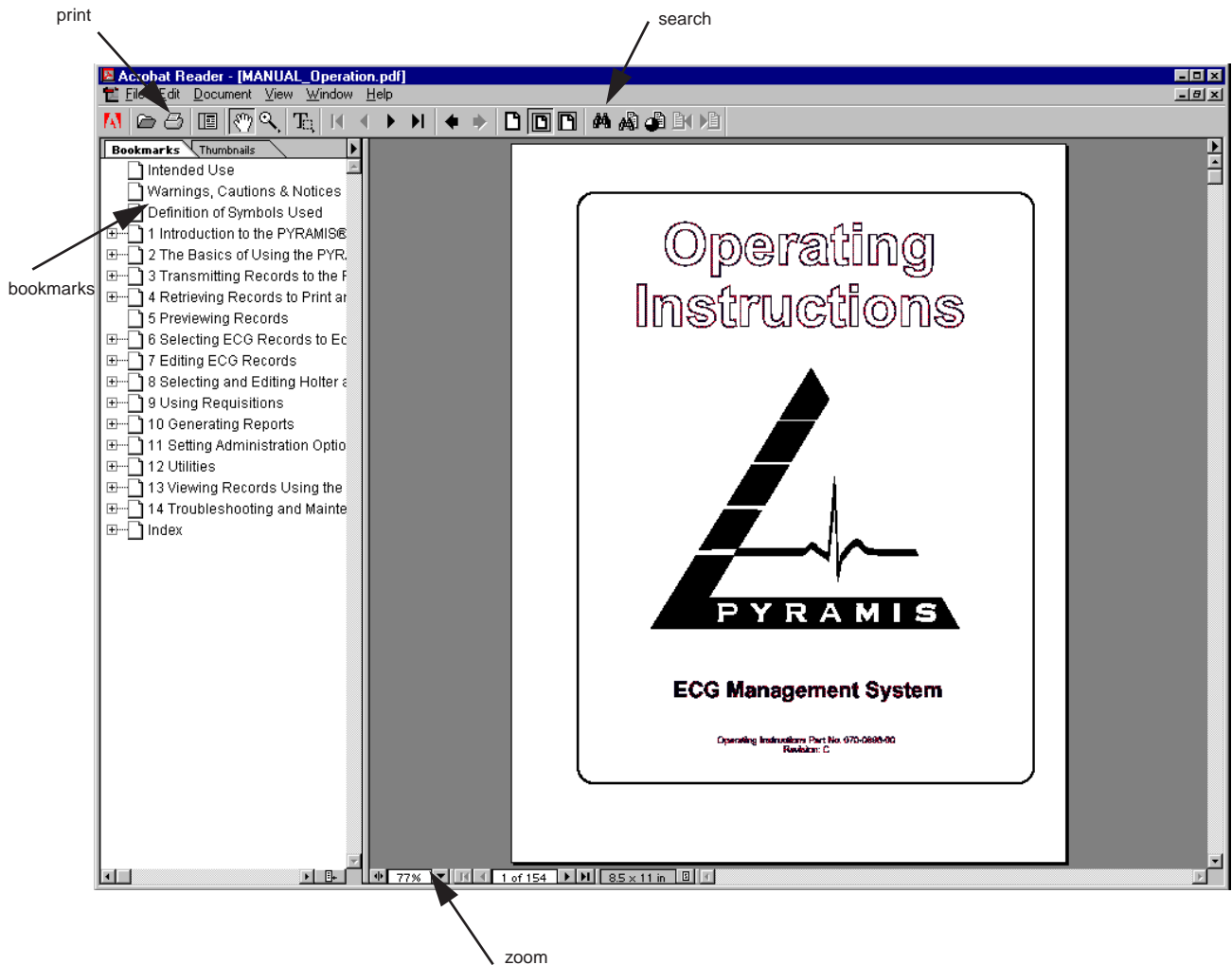
1. Double click on **My Computer**.
2. Double click on the C drive, **(C:)**.
3. Double click on the **Pyramis** folder.
4. Double click on the **Help** folder.
5. The electronic manuals are located in the **ELECTRONIC_MANUALS** folder. Double click on the **ELECTRONIC_MANUALS** folder to open it, and select a .pdf file by double clicking on it.

The following manuals are available for the Pyramis system:


Manual	File Name
Operating Instructions	MANUAL_Operation.pdf
Quick Steps	Quick_Steps.pdf
Addendum - Printers Installation Instructions	ADD_Printers.pdf
Addendum - Client Workstation Software Installation Instructions	ADD_Workstation.pdf
Addendum - Pyramis ECG Viewer Installation Instructions	ADD_ECGViewer.pdf
Addendum - Holter Report Viewer Installation Instructions	ADD_HolterViewer.pdf
Addendum - Stress Report Viewer Installation Instructions	ADD_StressViewer.pdf
Addendum - E-mail Setup Instructions	ADD_Email.pdf

* Adobe, Acrobat, and Reader are registered trademarks of Adobe Systems Incorporated in the United States.



6. The manual will open in Acrobat Reader.

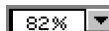


Bookmarks

To find specific information within the manual, use the **Bookmarks** section on the left side of the *Acrobat Reader* window (if bookmarks are hidden, press the F5 key, , to display bookmarks).



Click on the search icon to search for specific words. Alternately, you can open the *Find* window by pressing the control key, , and the F key, .



Click on the expand arrow at the bottom of the window to zoom in or zoom out.

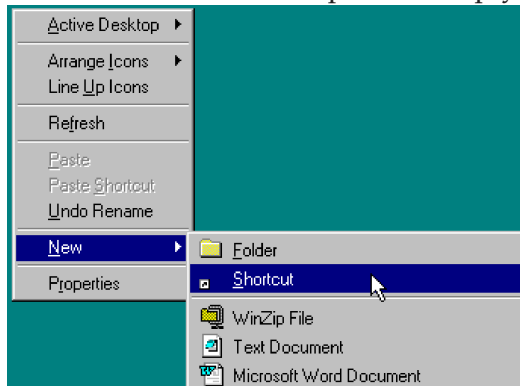


Click on the printer icon to print out a hard copy.

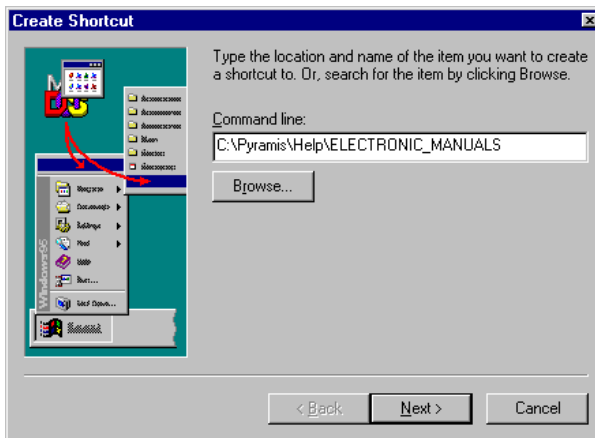
CREATE A SHORTCUT TO MANUALS

You can set up a shortcut on your desktop to access the Pyramis system manuals.

1. Right click on the Windows® desktop (in an empty part of the screen).



2. Select **New** and then **Shortcut**. The *Create Shortcut* window appears.



3. For Command line, type **C:\Pyramis\Help\ELECTRONIC_MANUALS**.
4. Click on **[Next]**.
5. Create a name for the shortcut; for example, **Pyramis Manuals**.
6. Click on **[Finish]**.
7. The shortcut folder icon appears on your desktop.

Once you have created a shortcut to the manuals, you can access the manuals by simply double clicking on the shortcut on your desktop.



3303 Monte Villa Parkway
Bothell, WA • 98021

Customer Service: (800) 426-0337
Technical Support: (800) 333-7770

071-0768-00 Rev.C